

CHAPTER 17

## Downloading and Installing Updates

This document explains how to download DeepEnd Program Updates and update your system to the current Build.

The following topics are covered...

- Interpreting the Build Number
- Downloading the DeepEnd Update
- Verifying the Database Integrity
- Installing the DeepEnd Update
- Reindexing the Database

### Interpreting the Build Number

Each release of the DeepEnd program has a unique Build Number for the purpose of knowing what version of the program you are running. The Build Number is a series of 3 numbers separated by periods.

**Example:** 3.58.4

Each number in the Build Number has a specific meaning.

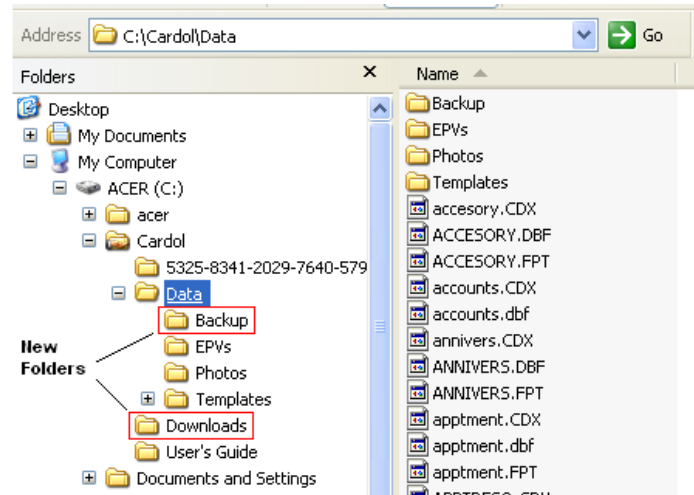
- 1st Number** The *Major Version* number. This number changes each year. In the example above, the Major Version is 3.
- 2nd Number** The *Database Revision Level*  
Some updates add features to the program that require changes to the database structure in order to work. The Database Revision Level is incremented with each update that requires changes to the database. In the example above, the Database Revision is 58. This means that there have been 58 revisions to the database structure since DeepEnd was first released.
- 3rd Number** The *Minor Version* number.  
This number is incremented with each release that does not require any changes to the database structure. In the example above, the Minor Version number is 4. This means that there have been 4 updates released since the update that changed the database structure to Revision 58. This number is reset to 0 each time the Database Revision Level is incremented.

To find the Build Number, select **About DeepEnd...** from the **Help** Menu.

## Downloading the DeepEnd Update

These download instructions assume that you have the following directory structure on your server. If you have a single user license, you can consider your computer to be the server.

There should be a shared folder on the server named Cardol with subdirectories like those shown below.

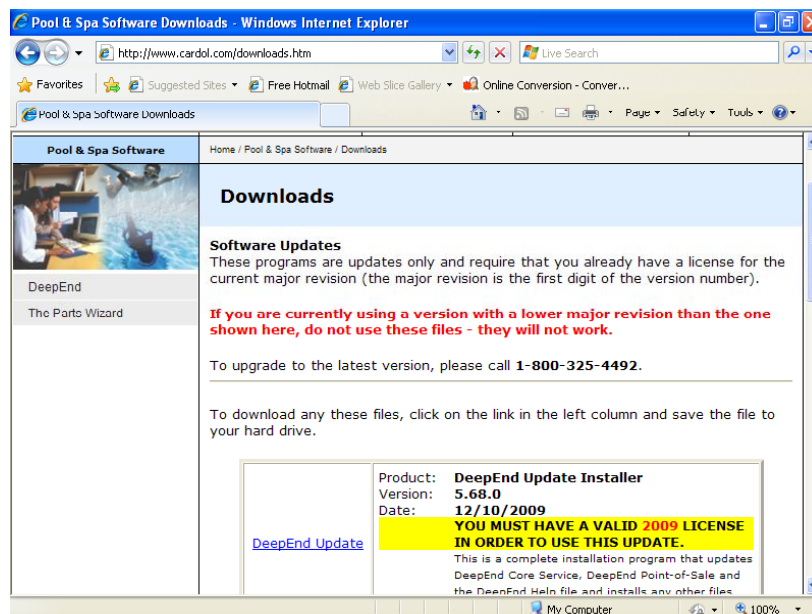


If your directory structure is different than this, you can either change it to match this or make the necessary changes in these instructions to suit your directory structure.

### Downloading the Update Installation File

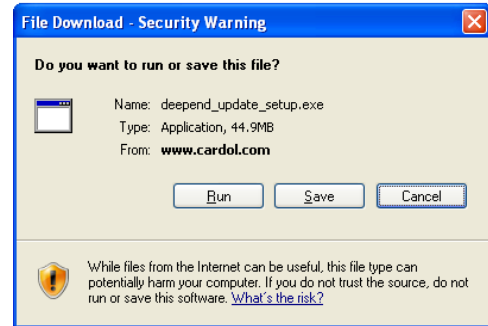
#### STEPS

1. Using your browser, go to <http://www.cardol.com/downloads.htm>



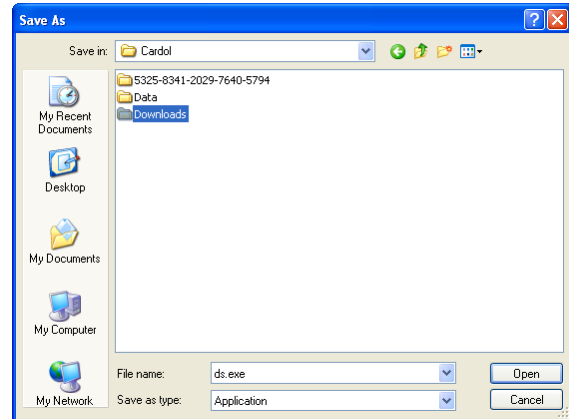
2. Click on the link named DeepEnd Update.

3. A message something like the one shown at right will be displayed.  
In this example, Internet Explorer is being used – yours will differ slightly if you are using a different browser.  
Click **Save**.



4. In the *Save As* dialog that appears, select the “**Downloads**” folder that you created in the shared folder on the server.

After the Downloads folder has been selected, click **Save**.



## Verifying the Database Integrity

*This section only applies if the Database Revision Level (the 2<sup>nd</sup> number in the build) of the new build is higher than the Database Revision Level of the build you are currently running. If there is no change in the Database Revision, proceed to the section titled “Installing the DeepEnd Update”.*

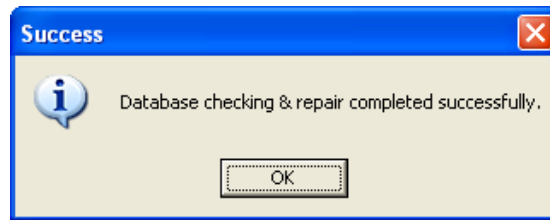
Some DeepEnd updates modify the database structure in order to implement new features that have been added to the program. The database structure is updated to match the Database Revision Level indicated in the DeepEnd Build number.

Before installing a DeepEnd update that requires a database update, the database files need to be checked for damage that could have happened due to power outages, computer reboots, etc. This is handled by the **DeepEnd Database Optimization & Repair Utility**. This utility should have been previously installed on at least one computer on your network. If it is not installed anywhere, please contact Cardol Technical Support.

### STEPS

1. Click **Start | All Programs | Cardol | DeepEnd Database Optimization & Repair Utility**.
2. Click **OK** to continue.  
The utility will check each table in the database and repair any damaged files that it can. If everything checks out OK, the following message will

be displayed.



*If this message is not displayed, DO NOT proceed any further. Call Cardol Technical Support for assistance.*

## Installing the DeepEnd Update

After the update has been downloaded, it needs to be installed on the workstations on the network. The following steps need to be carried out at each workstation.

### STEPS

#### Updating from Build 5.68.0 or Later

1. In Windows2000 or WindowsXP, click **Start**.  
In Windows Vista or Windows7, click the start (Windows logo) button.
2. Then click **All Programs | Cardol | DeepEnd Update Installer**.
3. Proceed to Step 4 in the following section.

### STEPS

#### Updating from Build 5.66.x or Earlier

1. If you are updating from Build ...  
In Windows2000 or WindowsXP, click **Start**, then click **Run...**  
With Windows Vista or Windows7, click the start (Windows logo) button, then click **All Programs**, then click **Accessories**, then click **Run**.
2. If you know the directory path to the Downloads folder on the server, type it into the Run window. Otherwise, click Browse to locate the file DeepEnd\_Update\_Setup.exe in the Downloads folder on your server. Note that the most common drive mapping setup in DeepEnd installations is to have a shared folder on the server named Cardol with Z-drive mapped to Cardol from each computer on the network. Therefore the complete path to the update installation program would be **Z:\Downloads\DeepEnd\_Update\_Setup.exe**
3. Click **OK**.
4. Click **Next**.
5. If DeepEnd was originally installed in the default location, the installer will automatically detect the location of the DeepEnd programs and the Database and set the installation folders accordingly. If DeepEnd was not originally installed in the default folder, click Browse to select the actual installation folder. The installer will automatically detect the location of the database folder.

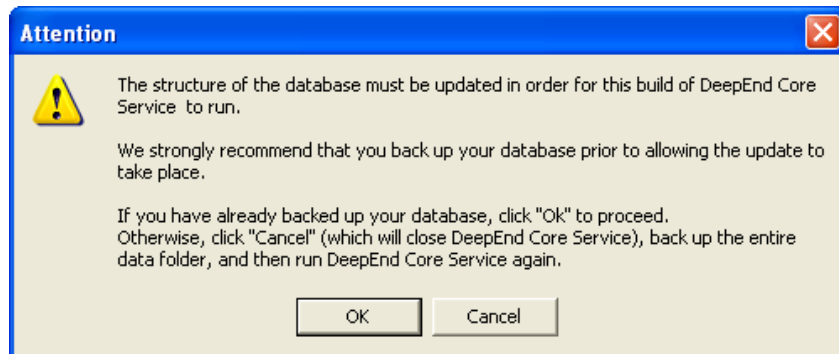
6. Click **Install**.  
The installer not only installs the necessary files for the update but also creates a shortcut on the **Start | All Programs | Cardol** menu for running the installer for subsequent updates if it does not already exist.
7. If the Database Revision Level (the 2<sup>nd</sup> number in the build) of the new build is *the same as* the Database Revision Level of the build you are currently running, the update is complete.  
Repeat Steps 1 thru 6 on the remaining workstations.

## Updating the Database (if applicable)

If the Database Revision Level (the 2<sup>nd</sup> number in the build) of the new build is *higher than* the Database Revision Level of the build you are currently running, DeepEnd will automatically update the database structure the first time you run the new build.

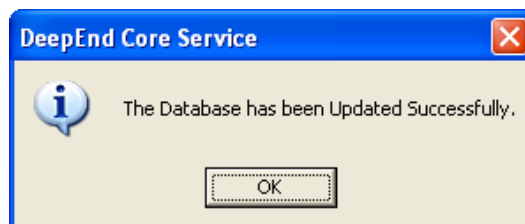
### STEPS

1. Run DeepEnd Core Service  
Click **Start | All Programs | Cardol | DeepEnd Core Service**.  
The following message will appear.



If you have made a backup copy of the database, click **OK**.  
Otherwise, click **Cancel** and follow the steps outlined in the section titled *Backing Up the Existing Files* earlier in this chapter.

2. When the database update is complete, the following message will be displayed.



## Reindexing the Database

After the database structure has been updated, it should be reindexed to ensure that everything is clean.

*This procedure is **REQUIRED** if any encrypted files in the Parts Wizard Library are revised. Due to the encryption, these files cannot be revised by the regular database update described above.*

*It is extremely rare that Parts Wizard Library files are revised but this is the case in Database Revision 68. Therefore, when updating to Build 5.68.x from 5.66.x or earlier, the database **MUST** be reindexed.*

- STEPS**
1. Run DeepEnd Core Service.
  2. Select **Tools | System Administration | Reindex the Database** from the menu.
  3. Click **Yes** to continue.